

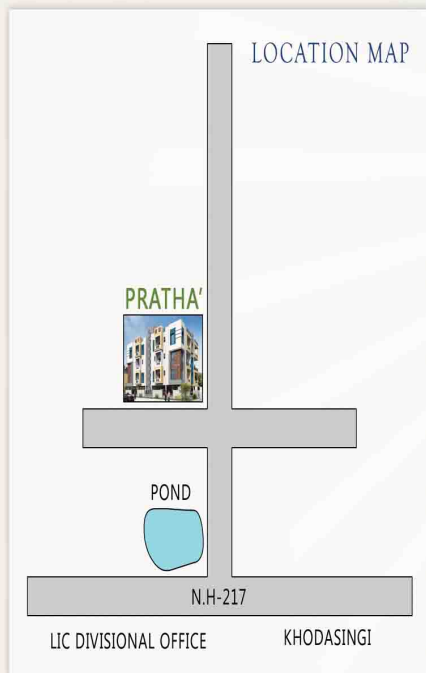
OUR ON GOING PROJECT....



**INDU VATIKA**  
in front of Radio Station



**SHREE CHAMAN**  
near to Mango Market



Project By:



Concepts & Designed by:

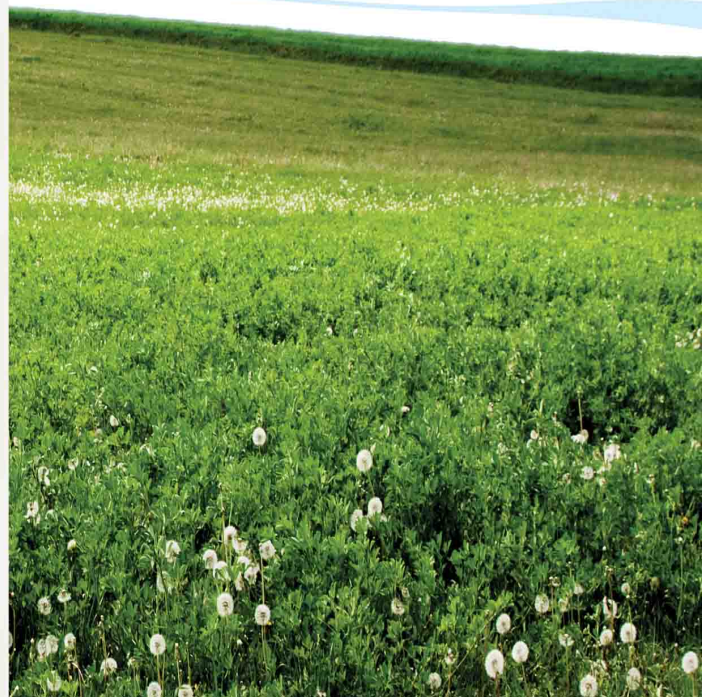


Disclaimer: All designs, perspectives, elevations, specifications, layout plans etc. are indicative and are subject to change. Accessories shown in some of the pictures in this brochure such as furniture, cabinet, electrical appliances, light fittings, wall & floor texture ect. are indicative/decorative and are not part of the sale offered.

# LEGEND OF PEACE

# PRATHA'

at KHODASINGI





*Elegant Elevation  
With Glorious Legend*





# SPECIFICATIONS

## Structure:

RCC framed structure in M20 grade concrete for strength, durability and longevity.

## Walls:

First Class KB brick masonry in 1:6 cement mortar.

## Plastering:

18mm thick cement plaster with water proofing admixture for outer wall and 12mm thick cement plaster for inner walls.

## Flooring:

Branded Premium Vitrified tiles in living / Dining / Bedroom. Anti-skid Ceramic / Granite tiles in toilet, Kitchen and balconies.

## Painting:

Emulsion with putty surfacing for interiors and water proof weather resistant acrylic based paint for exteriors.

## Doors:

Sal wood frames treated with anti-termite chemicals, main door- skinned paneled flushed and plywood flushed doors for the rest.

## Windows:

Aluminum framed and glazed with smoke glass.

## Kitchen:

Granite platform and stainless steel sink. 2 ft high glazed tiles skirting above WT.

## Stair case:

Stainless steel railings and granite stone cladding over raisers and treads.

## Electricals:

Concealed copper wiring with modular switches and accessories.

## Plumbing:

Concealed PVC pipe with branded white ware and standard sanitary fittings such as CP faucets, showers, stopcocks, towel rods / rings, mirrors etc.

# TYPICAL PLAN

